

Annual Review 2024-25



The Heart of Battersea



Thank you to all the partners, donors, supporters and friends of KLS who help us reduce isolation and poverty in Battersea.

Donate
by scanning
this QR code



Katherine Low Settlement
108 Battersea High Street
London SW11 3HP

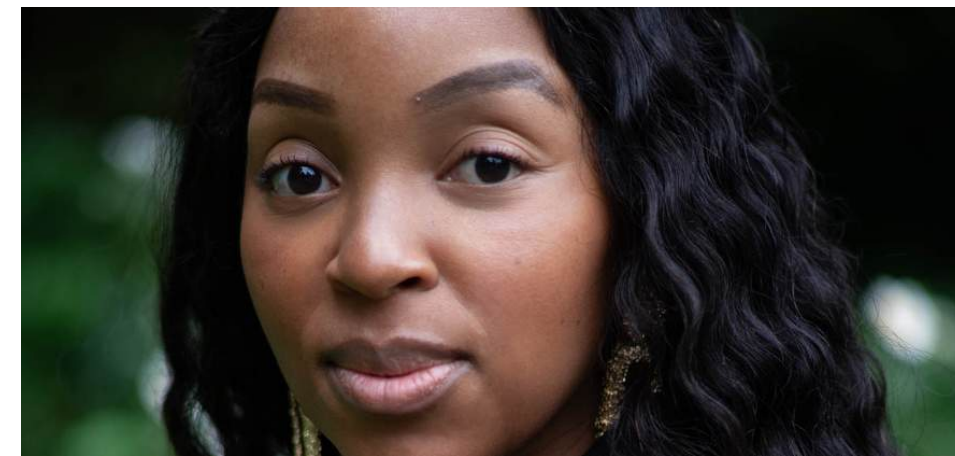
020 7223 2845
info@klsettlement.org.uk
www.klsettlement.org.uk

Registered charity no. 1081248
Company limited by guarantee no. 3814833

Follow us on



Volunteer — Give Back, Grow, and Belong



“What began as something to fill my time has become so much more. Volunteering at KLS has changed how I see myself, what I can achieve, and the community around me. You gain laughter, connection and confidence - and you give the same back in return.”

- We have a range of volunteering roles and can help you find the one that's right for you
- Our team will make sure you're fully trained and supported every step of the way

Thank you to all the volunteers working at the heart of KLS this year.

To join them, contact Chris at chris@klsettlement.org.uk

Help Us Keep Battersea Connected and Thriving



Your gift changes lives right here in Battersea. Every pound helps us run vital programmes—from the Elders Lunch Club and Homework Club to our Community Learning classes—so members of all ages can connect, learn and thrive.

Ways to give

- Give monthly – regular donations let us plan programmes with confidence
- Take on a challenge – run, cycle or create your own sponsored event in aid of KLS
- Ask your workplace – many employers match donations or choose a Charity of the Year
- Leave a legacy – a gift in your Will keeps your support alive for future generations

Thank you to everyone who has already given so generously.

Ready to help? Contact Sarah at sarah@klsettlement.org.uk to get started and be part of our community's future.

Donate
by scanning
this QR code



Rent a KLS Space for Your Special Occasion



Host your event in the heart of Battersea at Katherine Low Settlement.

Whether it's a birthday celebration, conference, rehearsal, training session or party, our welcoming venue will make it memorable. We are open **seven days a week** with excellent transport links and flexible options for everything from one-off events to weekly classes and long-term bookings.



Why Choose KLS

- Versatile spaces for up to 70 guests
- Six rooms of varying sizes to suit your needs
- Modern technical equipment available
- Fully accessible ground-floor rooms
- A friendly, professional team to support your event



By hiring space at KLS, you're not only getting a great venue — you're also supporting vital community work across Wandsworth.

Let us help you create the perfect setting for your gathering.

Contact: Tony at bookings@klsettlement.org.uk to check availability or arrange a viewing.

Celebrating a Century of Community: Our Heritage Film



Celebrating a century of community, we have created a landmark documentary with support from the National Lottery Heritage Fund and in partnership with digital:works, specialists in oral-history filmmaking.

This beautifully crafted film tells the story of KLS from the 1920s to today through the voices of those who know it best—our members, volunteers, staff, and partners.

Volunteers received oral-history training and interviewed 22 people aged 31 to 101, capturing vivid memories of early-years provision, youth clubs, refugee and disability projects, mental-health initiatives, elders' programmes, and much more.



Blending these interviews with rarely seen archive footage and photographs, the film offers a rich, first-hand account of a century of community life in Battersea and of KLS's enduring role within it. We are enormously proud of this documentary, which honours our past while inspiring the next chapter of our work.

Scan the QR code to watch our documentary



Finances 2024/2025

Our latest Annual Report & Accounts are available online www.klsettlement.org.uk/about/reports



Our Values, Objectives and Milestones



Our vision
We exist to create an inclusive society where the communities of Battersea and Wandsworth achieve their potential together.

- Our values**
- Kindness
 - Respect
 - Collaboration
 - Sustainability
- Our aims**
- Foster community
 - Promote empowerment
 - Fight poverty
 - Reduce isolation

1104

members we supported through the year

100

regular donors and institutional funders

161

volunteers help us run our three programmes

65+

partners including charities and businesses

Future Foundations Programme



"I was so worried and alone, my son was not in school and I didn't know what to do. I went to KLS and they helped me a lot, now he is in school and he gets extra support and I can go to the English classes."

KLS remains steadfast in supporting sanctuary-seeking and migrant families across Wandsworth. Our new Future Foundations programme brings together the best of Love to Learn and ESOL in one dynamic, family-focused offer.

Every year we stand alongside children, young people and parents, guiding them from early years through to post-16. We help build confidence, strengthen skills and open doors to education, employment and full community life.

From 1-to-1 mentoring, homework and GCSE clubs, English classes and youth groups to wellbeing workshops, tailored casework, and family trips, Future Foundations gives every participant the chance to learn, connect and thrive.

ESOL Programme



We have provided free English for Speakers of Other Languages (ESOL) courses for migrant and refugee communities in Wandsworth since 1999.

"I like KLS--everything is nice. Reading, writing, talking to each other. More friends - all is friendly."

Exams, Qualifications and Next Steps

Most students can take exams and gain a nationally recognised certificate with NOCN (National Open College Network). On average, students stay with us for 3-5 years before moving on to further education and employment.

Free In-house Crèche

Our free crèche supported **43 pre-school children**, giving parents the freedom to learn. More than a quarter of our students rely on this service—many say they simply couldn't attend classes without it.

144

students 2023-2024 (+ 26% from 23/24)

65%

achieved a nationally recognised certificate

96%

increased their confidence to use English in the 'real world'



Extra-curricular programme

Learning English doesn't stop at the classroom door. Our students build confidence and community through a rich mix of activities that combine language practice with new skills and friendships.

They join walking groups, cycling lessons, and London outings; take part in writing workshops, art therapy, yoga, dance, and exercise; and explore practical skills such as cooking, photography, sewing, and a lively book club.

These sessions make learning fun while helping students use English in real-life settings and connect with one another.

Love to Learn Programme



We have been working with children and young people from sanctuary-seeking backgrounds, and their families/carers, since 2004, providing a wide range of education, advice and wellbeing services .

Youth work

- Homework and Youth Clubs
- GCSE Clubs
- Post-16 employability support
- Online mentoring
- Early Years mentoring
- Trips and outdoor activities
- Summer holidays project
- Art therapy project

"I feel like KLS is a safe place for me, I always have somewhere to go if I need help, I learn a lot there and it is fun, I loved going sailing, it was the best thing I ever did."

Casework and advice

We helped 162 families and young people to resolve issues such as school exclusions, post-16 choices, SEND issues, poor housing and mental ill-health (+ 14% from 23/24).

383

young people supported from refugee background

96%

feel positive about themselves

73%

5 - 14 year olds engage in learning at our homework clubs

67%

14 - 21 year olds want to go into further education or know what to do next

"I had so many letters and I didn't know what they said because my English is very little. The casework team helped me and they called the council about the debt I had. My children and I could have lost our home, but now I have a payment plan and I know if I have any other problems I know where to go."



Partnership development

- Wide-ranging workshops and visits featuring Surrey Cricket, Battersea Summer Scheme, Fairbeats Children's Music Charity, Set Them Up Foundation, NHS Wellbeing, and the Good Law Project on Youth Rights & Entitlements
- Residential adventures ranging from water-skills training on the Isle of Wight to hands-on rural experiences at Jamie's Farm
- Careers Fairs supporting over 40 young people with a range of businesses and other partners

Elders Programme



Since 1924, we have provided a range of projects and activities for older people, focusing on health and wellbeing, creative arts, intergenerational work, connecting neighbours, trips and outings.

"KLS has a huge impact on my life because it makes my days different and gives me something to look forward to. It also lifts my spirits."

415

elder members

98%

enjoy the social interaction

22

multidisciplinary activities each week

86%

feel less isolated

Core Services

- Lunch Club
- Exercise classes
- Sewing Club
- Film Club
- Themed parties
- Advocacy support
- Wellbeing support
- Outreach support

Age Well Battersea

141 members join weekly activities.

- Creative art classes and socials
- Creating and sharing meals
- Photo-walking groups
- Exercise classes
- Horizons Club



Tech Up Battersea

Tech Beginners and Tech Up are weekly sessions based on the foundation skills of the Essential Digital Skills Framework.

Supported by their peer mentors, 118 elders learn to:

- Buy, borrow, and access digital products
- Connect to affordable internet and digital services
- Learn and master daily digital skills

"...you can ask for help and get it. I am so grateful of the attention. If something goes wrong with my tablet or phone I know I can come here. You get valuable help and advice and it's all free. I am so happy that all those years ago my GP passed on my details and I was referred to KLS. I am so grateful."